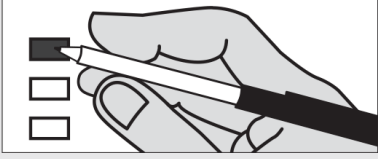


Instructions

To vote



Completely fill in the box to the left of your choice using blue or black ink.

Vote for only one choice in each contest.

Marking more than once choice in a contest is an overvote and no votes for that contest will be counted.

Correcting a mistake



Draw a line through the incorrect candidate name or ballot measure choice.

You may then make another choice.

Optional write-in

To vote for a candidate not listed for that race, fill in the box to the left of the dashed line and print the name on the line.

For a list of the people and organizations that donated to state and local candidates and ballot measure campaigns, visit www.pdc.wa.gov

No stamp needed to return your ballot.

READ: Each candidate for partisan office may state a political party that he or she prefers. A candidate's preference does not imply that the candidate is nominated or endorsed by the party, or that the party approves of or associates with that candidate.

Federal Partisan Offices

United States Senator

- Thor Amundson (Prefers Independent Party)
- Dave Strider (Prefers Independent Party)
- Joey Gibson (Prefers Republican Party)
- Mike Luke (Prefers Libertarian Party)
- GoodSpaceGuy (Prefers Republican Party)
- Clint R. Tannehill (Prefers Democratic Party)
- Maria Cantwell (Prefers Democratic Party)
- Susan Hutchison (Prefers Republican Party)
- Brad Chase (Prefers FDFR Party)
- Tim Owen (Prefers Republican Party)
- Matthew D. Heines (Prefers Republican Party)
- Sam Wright (Prefers The Human Rights Party)
- Art Coday (Prefers Republican Party)
- John Orlinksi (Prefers Republican Party)
- Charlie R Jackson (Prefers Independent Party)
- Keith Swank (Prefers Republican Party)
- Alex Tsimerman (Prefers StandupAmerica Party)
- RC Smith (Prefers Republican Party)
- Don L. Rivers (Prefers Democratic Party)
- Jennifer Gigi Ferguson (Prefers Independent Party)
- Steve Hoffman (Prefers Freedom Socialist Party)
- George H. Kalberer (Prefers Democratic Party)
- James Robert "Jimmie" Deal (Prefers Green Party)

- Roque "Rocky" De La Fuente (Prefers Republican Party)
- Jon Butler (Prefers Independent Party)
- Dave Bryant (Prefers Republican Party)
- Mohammad Said (Prefers Democratic Party)
- Matt Hawkins (Prefers Republican Party)
- Glen R Stockwell (Prefers Republican Party)

U.S. Representative Congressional District 1

- Robert Mair (States No Party Preference)
- Adam Pilskog (States No Party Preference)
- Suzan DelBene (Prefers Democratic Party)
- Jeffrey Beeler (Prefers Republican Party)
- Scott Stafne (Prefers Republican Party)

U.S. Representative, Congressional District 2

- Collin Richard Carlson (Prefers Democratic Party)
- Uncle Mover (Prefers Moderate GOP Party)
- Brian Luke (Prefers Libertarian Party)
- Stonewall Jackson Bird (Stoney) (Prefers Green Party)
- Rick Larsen (Prefers Democratic Party)
- Gary Franco (Prefers Independent Party)

State Partisan Offices

Legislative District 10 State Representative Position 1

- Scott McMullen (Prefers Democratic Party)
- Norma Smith (Prefers GOP Party)

Legislative District 10 State Representative Position 2

- Dave Paul (Prefers Democratic Party)
- Dave Hayes (Prefers GOP Party)

Legislative District 39 State Senator 2-year unexpired term

- Claus Joens (Prefers Democratic Party)
- Jamal Rabieh (Prefers Independent Party)
- Keith L. Wagoner (Prefers Republican Party)
- Elizabeth Scott (Prefers Republican Party)

Legislative District 39 State Representative Position 1

- Robert J. Sutherland (Prefers Republican Party)
- Ivan Lewis (Prefers Democratic Party)
- Randy J Hayden (Prefers GOP Party)

Legislative District 39 State Representative Position 2 short/full term

- Carolyn Eslick (Prefers Republican Party)
- Eric Halvorson (Prefers Democratic Party)

Continues Next Page

50348

State Partisan Offices

**Legislative District 40
State Representative Position 1**

Alex Ramel (Prefers Democratic Party)

Debra Lekanoff (Prefers Democratic Party)

Michael Petrish (Prefers Republican Party)

Daniel Miller (Prefers Republican Party)

Rud Browne (Prefers Democratic Party)

Tom Pasma (Prefers Democratic Party)

**Legislative District 40
State Representative Position 2**

Jeff Morris (Prefers Democratic Party)

County Partisan Offices

Assessor

Dave Thomas (Prefers Republican Party)

Auditor

Sandy Perkins (Prefers Democratic Party)

Mike Urban (Prefers Democratic Party)

Clerk

Melissa Beaton (Prefers Democrat Party)

County Commissioner Position 3

Lisa Janicki (Prefers Democratic Party)

Coroner

Hayley Thompson (Prefers Democratic Party)

Prosecuting Attorney

Rich Weyrich (Prefers Democratic Party)

Sheriff

Don McDermott (Prefers Democratic Party)

Treasurer

Bradley Whaley (Prefers Republican Party)

Clyde G Williams (Prefers Republican Party)

Jackie Brunson (Prefers Democrat Party)

State Court of Appeals

**Division 1, District 3,
Judge Position 1
Nonpartisan Office**

Tom SeGuine

Lisa Keeler

Cecily Hazelrigg-Hernandez

Roger Leishman

Rita Latsinova

Public Utility District No. 1

**Commissioner Position 2,
Nonpartisan Office**

Bill Swanson

Joe Lindquist

Robbie Robertson

Countywide Measure

**Proposition No. 1
Continuation of Emergency
Medical Services Levy
(Skagit County EMS System)**

The Board of Skagit Commissioners adopted Resolution R20180099 concerning continued funding of the countywide emergency medical services system. Shall Skagit County be authorized to impose regular property tax levies of \$0.44 or less per \$1,000 of assessed valuation for collection in 2019 and for five consecutive years thereafter?

Yes

No

Local Measure

Snohomish/Skagit County Fire Protection District No. 24

**Board of Commissioners -
Proposition Authorizing Property Tax Levy**

The Board of Commissioners of Snohomish/Skagit County Fire Protection District No. 24 adopted Resolution No. 2018-01 concerning a proposition to establish its regular property tax levy for maintenance and operations to an amount not to exceed \$1.25 per \$1,000.00 of assessed valuation to be levied in 2018 for collection in 2019. The dollar amount of the 2018 levy shall serve as the base for the purpose of computing the limitations for subsequent levies as provided by chapter 84.55 RCW.

Should this Proposition be:

Approved

Rejected

Precinct Committee Officer (PCO)
For this office only: In order to vote for precinct committee officer, a partisan office, you must affirm that you are a Democrat or Republican and may vote only for one candidate from the party you select. Your vote for a candidate affirms your affiliation with the same party as the candidate. This preference is private and will not be matched to your name or shared.

**Precinct 148
Republican Party Candidates**

James E. Cummins III
I affirm I am a Republican

Grey S. Wunderly
I affirm I am a Republican

**Precinct 158
Democratic Party Candidates**

Bryce Nickel
I affirm I am a Democrat

Jan Heald Robinson
I affirm I am a Democrat

**Precinct 207
Democratic Party Candidates**

Wim Houppermans
I affirm I am a Democrat

Sara Holahan
I affirm I am a Democrat

**Precinct 305
Democratic Party Candidates**

Andrew Omdal
I affirm I am a Democrat

David Waterman
I affirm I am a Democrat

Erna Berghuys Dyer
I affirm I am a Democrat

**Precinct 307
Democratic Party Candidates**

Julie Bishop
I affirm I am a Democrat

Richard Brocksmith
I affirm I am a Democrat

Joani Pfeiffer
I affirm I am a Democrat

**Precinct 309
Democratic Party Candidates**

Marshall LaFleur
I affirm I am a Democrat

Kenneth C. Vanderhyde
I affirm I am a Democrat

End of Ballot